

Martin Floating Row Cleaners



Shown with optional side treader wheels (STW-04)

Martin WA1345 Floating Row Cleaner Features:

- 45 Degree for narrow rows
- Heavy Duty frame
- 3/8" thick , heat treated T-1 right and left toothed wheels with diamond shaped points
- Martins B series hub with Heavy Duty triple lip seal 40mm bearing
- Heavy gauge dust caps
- Smart Clean compatible



Shown with optional side treader wheels (STW-04) and Cam Adjustment (CA-03)

WA1360 Floating Row Cleaner Features:

- Heavy Duty frame
- 3/8" thick, heat treated T-1 right and left toothed wheels with diamond shaped points
- Stationary triple-lip seals
- Heavy-gauge dust caps
- Double tapered bearings
- Greaseable hubs
- Available for most planter models
- Patent Number 8,631,879, D601,593 and others pending



Shown with optional Cam Adjustment (CA-03)

Martin WA1760 Floating Row Cleaner Features:

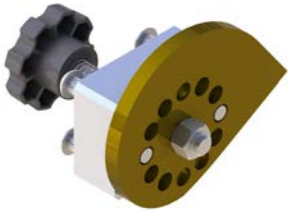
- Heavy Duty frame
- 17" 3/8 thick heat treated T-1 right and left toothed wheels with diamond shaped points
- Stationary triple-lip seals
- Heavy-gauge dust caps
- Double tapered bearings
- Greaseable hubs
- Ideal for Strip Till machines

Floating Row Cleaners Options



STW-04 Side Treader Wheels

Aluminum Side Treader wheels are purchased on over 95% of floating row cleaners and are designed to prevent the row cleaner wheels trenching within soft soils. They also provide traction to help keep the row cleaners turning in heavy residue.



CA-03 Cam Adjusters

Cam adjusters are available for all WA1360 row cleaners and they speed up the process of changing the working depth of the row cleaner frames. They are especially beneficial for growers who frequently switch from no-till to conventional soils.



WW-04 Wheel Weights

Wheel weights are strongly recommended when no-tilling into heavy residue (such as heavy corn or wheat residue). Each pair adds 8 lbs of weight per row. Two pairs can be added per row for extremely heavy residue such as heavy Bt cornstalks.

Unit Set Back Kits



USB 70

Unit set back kit for John Deere 7000 series and Kinze planters. This kit moves the unit back 6" to allow more clearance when installing floating row cleaners around certain no-till coulters configurations.



USB 72

Unit set back kit for John Deere 7200 series through John Deere 1700 series planters. Moves the unit back 6" to allow more clearance when placing floating row cleaners around no-till coulters configurations.

John Deere Mounts



BDC 1360* This mount attaches to John Deere 7200 (and later) series planters with a John Deere unit mounted no-till coulter. It will also install behind the John Deere single disc fertilizer opener (with extended parallel arms). Measures 22" from planter face plate to front of row cleaner wheels.



BD 1360* This mount attaches to John Deere 7200 (and later) series planters without No-till coulters. Measures 19" from planter face plate to front of row cleaner wheels.

* If equipping the rear units of a John Deere 1790 with 1360 row cleaners, long parallel arms all the way across the rear units are strongly encouraged, especially when operating in heavy residue.



Kinze Mounts

BKC 1360** This mount attaches to Kinze 2000 and 3000 series planters with a unit mounted no-till coulter. Measures 22" from planter face plate to front of row cleaner wheels.



BKW 1360 This mount attaches to Kinze 2000 and 3000 series planters without a unit mounted no-till coulter. Measures 19" from planter face plate to front of row cleaner wheels.

** If installing WA1360 row cleaners on Kinze Twinline planters with no-till coulters, unit set back kits will be required behind the transport wheels on the rear units. Unit set-back kits (USB-70) are available from Martin Industries.



Kinze 4900 Mounts

BK41360

This mount attaches to Kinze 4900 series planter without unit mounted no-till coulters. Measures 19" from face plate to front of row cleaner wheels.



BK4C1360

This mount attaches to 4900 series Kinze planter with unit mounted no-till coulters.

Case IH Mounts

BCIH 1360***

This mount attaches to Case IH planters without frame mounted no-till coulters. Measures 22" forward from the planter unit.



***Please note the BCIH 1360 will not fit on Case planters that have the hexagonal drive shaft under the parallel arms. (There is not enough upward clearance above the BCIH 1360 and below the parallel arms to allow the frame to float sufficiently.)

White Mounts

BKW 1360****

This mount attaches to White 6000 and 8000 series planters without a no-till coulters. Measures 19" from planter face plate to front of the row cleaner wheels.



**** If installing BKW 1360 row cleaners on White planters, make sure there is enough clearance between the top of the BKW 1360 frame and the bottom of the planter drive shaft. Some planters may have interference problems when the row cleaners raise up on uneven ground.

Units shown with optional side treader wheels (STW-04) and Cam Adjustment (CA-03)

Martin C-125

We still offer the proven C-125. The C-125 is a floating row cleaner with 2 x 13" row cleaner wheels, heavy duty hubs, double tapered bearings and optional aluminum side treader wheels.

C-125 was superseded by the WA1360; however, it is available for certain planter configurations with after market coulters. If in doubt, please call for assistance.



Shown with optional side treader wheels (STW-04)

Martin WA1532 Fixed Row Cleaners

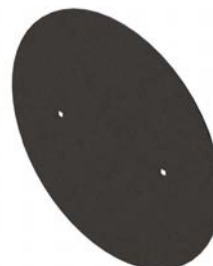
The Martin original style row cleaner clears the widest path of any tooth wheel row cleaner on the market.

The 15" diameter, 3/8" thick T-1 heat treated wheels are made left and right in order to shed the residue better. The axles are located to the rear of the adjustable stem in order to insure a simultaneous stretching and cutting of the residue.

The teeth on the cleaning wheels actually reach past the edge of the planter gauge wheel rubber. This guarantees a clear path for planter operation even at reduced speeds. The space between the teeth is wider than any competitor's to enable soil to remain in place as residue is raked aside. The teeth intersect in order to reach the entire row middle and to aid in cleaning one another.

GWS-01 Optional Gauge Wheel Shield

Attaches to the side of the gauge wheel to smooth out the flow of residue between unit and transport wheels. Two required per row.



WA1532



Shown with MT772

WA1532 Features

- Rigidly mounted directly to planter unit face plate
- Easily adjustable in 1/4" increments with lift assist handle and spring
- Patent #5,507,351
- Heavy duty cast 4-bolt hub
- Double tapered bearings
- Triple lip seals

WA1332



Shown with MT772

Martin WA1332 and WA1334 Row Cleaners

- Rigidly mounted directly to planter unit face plate
- Easily adjustable in 1/4" increments with lift assist handle and spring
- Movable axles with the Martin Exclusive D-Lock System allow for several mounting positions (intersect, offset, retracted)
- 13" diameter toothed steel wheels with diamond shaped points allow plenty of upward adjustment in loosely worked soils

WA1334



Shown with MT982

WA1332 Row Cleaner comes complete with 1 1/2" stem wheel assembly. (For use with all pin adjust brackets which accept 1 1/2" stems.)

WA1334 Row Cleaner is specifically designed for IH Early-Riser planters which require extra tilt. (For use with all pin adjust brackets which accept 2" stems.)

WA1320N



Shown with MT772

Martin WA1320N Row Cleaners

The Martin Narrow Row Cleaner Model WA1320N is designed to clean residue from the vital seed trench area with less total disturbance than regular models. Two wheels are used to insure that residue is removed from the row center and not just dragged across the row which may occur with single wheel models.

This model is recommended for 20" planters that have all units on one bar operating in moderate residue. Because the cleaning teeth reach their maximum depth nearer the row than other models, the seed trench is more easily opened and the trench walls are more likely to crumble. The planter path will retain more moisture where this model is used than where the regular width cleaners are operated.



Martin B413 Row Cleaner

For use only on White Frame Mounted Double Arm Coulter.

- 3/8" thick, right and left 13" diameter toothed steel wheels with diamond shaped points
- Side treader wheels are standard on this model to create a larger gripping surface for the toothed wheels
- Mounting bracket included

Pin Adjust Brackets For Fixed Row Cleaners



- MT512** Attaches to White 5000 Series planters. Bolts directly to planter using existing holes. Accepts 1 1/2" wheel assembly.



- MT610** Attaches to White 6000 Series planters with heavy duty down pressure springs. Accepts 1 1/2" wheel assembly.



- MT810** Attaches to White 8000 Series planters. Accepts 1 1/2" wheel assembly.



MT892 Attaches to Case IH 800 and 900 series planters. For 2" tube wheel assemblies. (Additional mounting kit required for early 800 series planters).



MT1250 Attaches to Case IH 1200, 1250 and 1300 series planters for 2" tube wheel assemblies. Will not work with pneumatic down force systems.



MT4772 Attaches to Kinze 4900 planter for use with fixed row cleaner WA1332 or WA1532. Accepts 1 1/2" wheel assembly.



MT772 Rear Position: Attaches to Kinze, John Deere and White 6000 for use with fixed row cleaner WA1332 or WA1532. Accepts 1 1/2" wheel